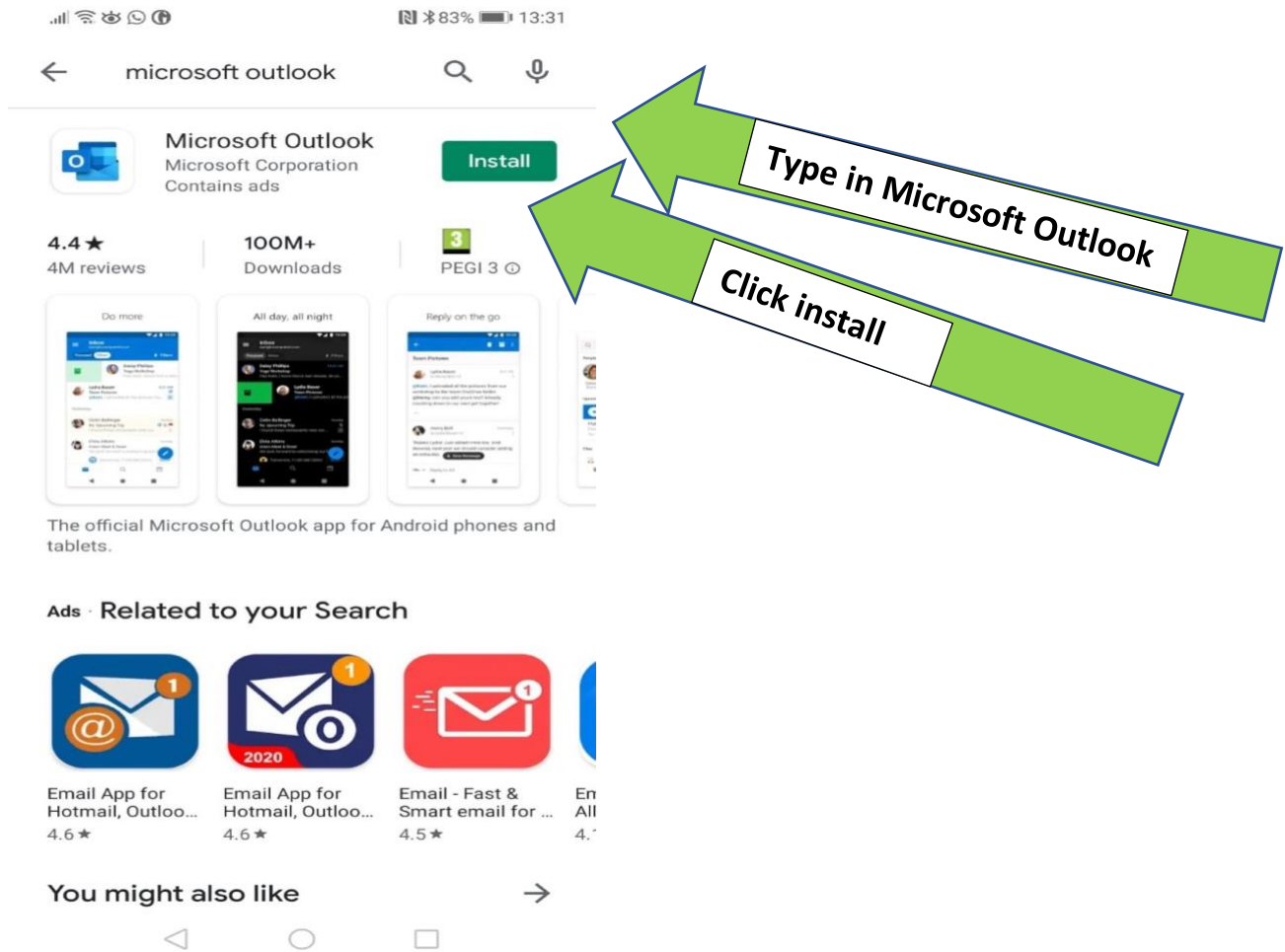


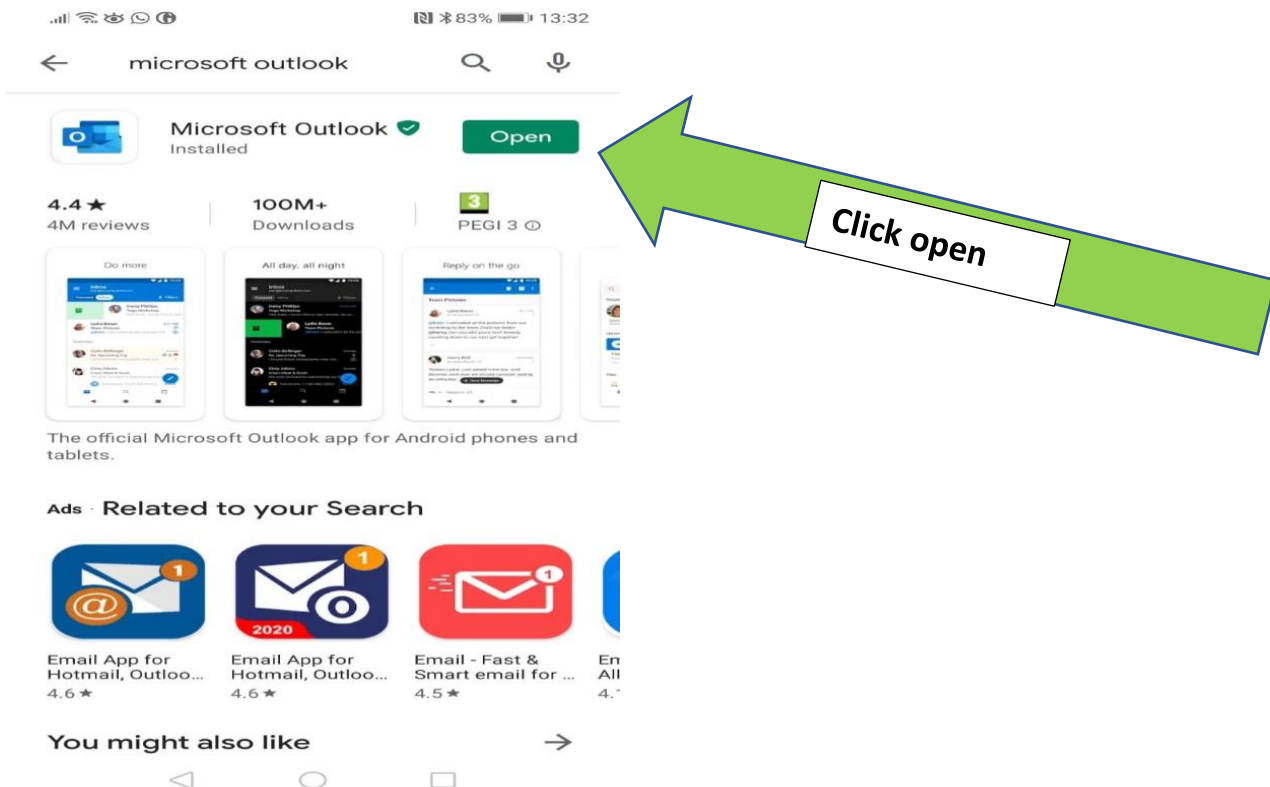
Guidelines on how to access your school email account on an Android device.

Email larkinupdates@lcc.cdetb.ie if any issues

Step 1: Go to the play store and type in Microsoft Outlook and click install



Step 2: Click open



Step 3: Click Get Started



83% 13:33



Outlook

A better way to manage your email.

GET STARTED



Step 4: Type in your school email address

Add account

Enter your work or personal email address.

Email address

...@...JTS

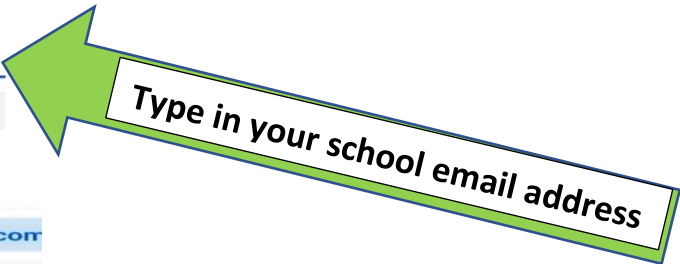
PRIVACY AND TERMS

@live.com

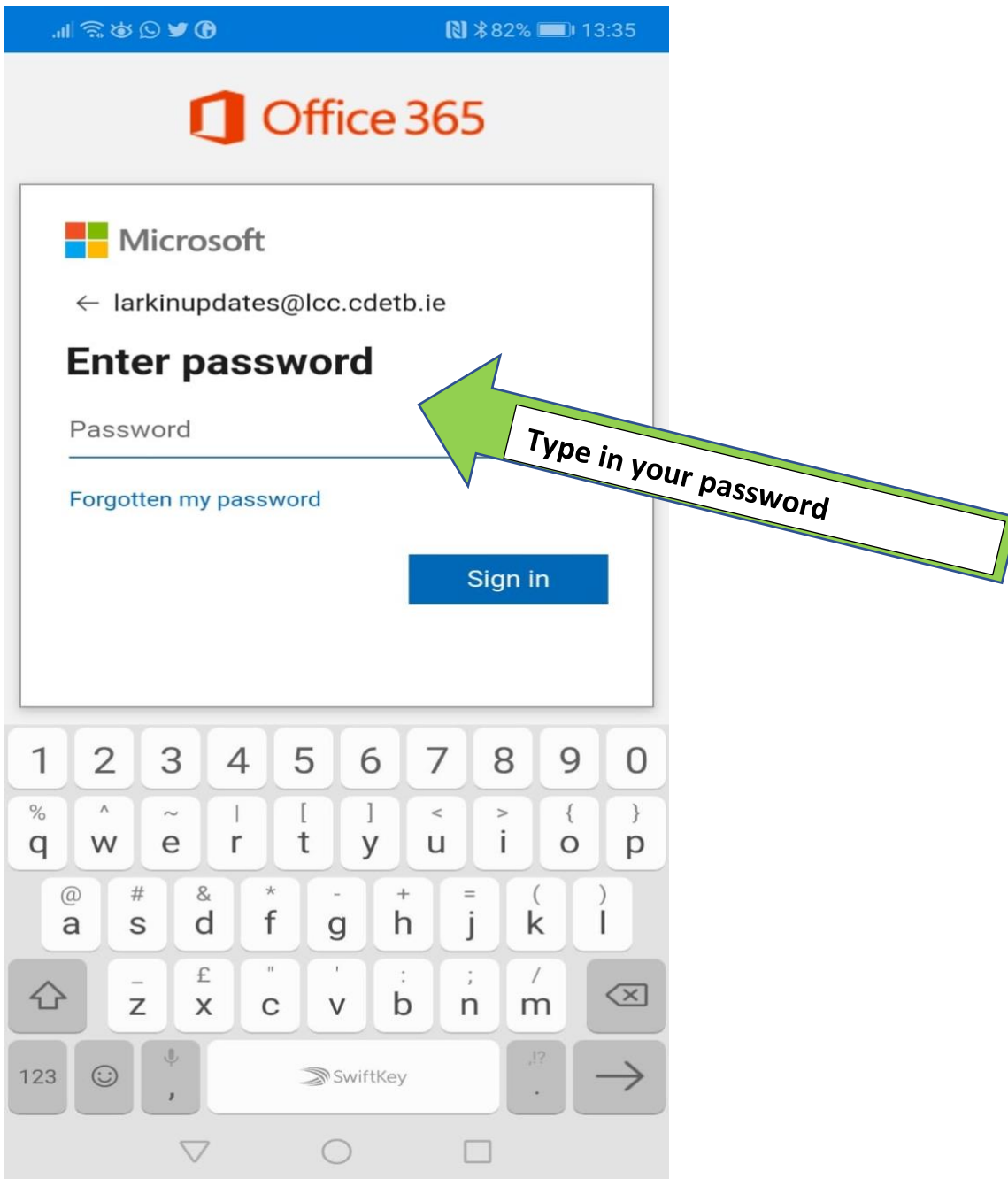
@msn.com

@btinternet.com

CONTINUE >



Step 5: Type in your password



Please note you can download Microsoft word, PowerPoint, one note, excel and teams in the same way. You just use your school email address to get access to the application.